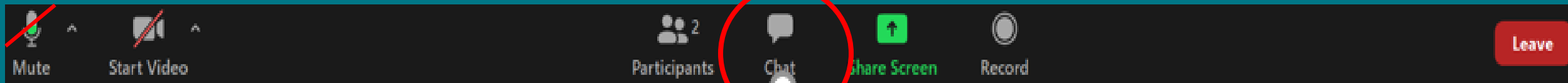


WELCOME

You have joined an online briefing for the Biodiversity Conservation Trust's Snow Gum woodlands and Grasslands conservation tender

- Now that you have joined the meeting, can you please mute your mic and turn video off. Please do not adjust these settings.
- There will be an opportunity for questions and this will be outlined once the presentation commences.
- If you encounter technical difficulties, send a message through the **chat box** at the bottom centre of your screen and we will try to assist you



Mute Start Video Participants 2 Chat Share Screen Record Leave

The image shows a Zoom meeting control bar at the bottom of the screen. It includes icons for Mute, Start Video, Participants (2), Chat, Share Screen, Record, and a red Leave button. The Chat icon is circled in red.

Snow gum woodlands and Grasslands conservation tender

Agenda

- Background
- BCT programs
- Conservation Tenders
- Tender Objectives
- Eligibility criteria
- Target vegetation
- Tender process
- Expressing interest
- Questions



Our Purpose and Goals



1. **Encourage landholders** to enter agreements to conserve biodiversity and support productive landscapes
2. Deliver a strategic **biodiversity offsetting** service.
3. **Support our landholders** to support biodiversity on their land.
4. Promote public knowledge, appreciation and understanding of the **value of biodiversity conservation**.
5. **Invest in our people** to build an engaged, professional, customer-oriented and high-performing organisation.



- Landholder agreements
- Conservation agreements
- Wildlife Refuge
- Conservation Partner Grants
- Partner-funded agreements



- Conservation Tenders
- Fixed Price Offer
- Co-Investment Partnerships
- Revolving Fund



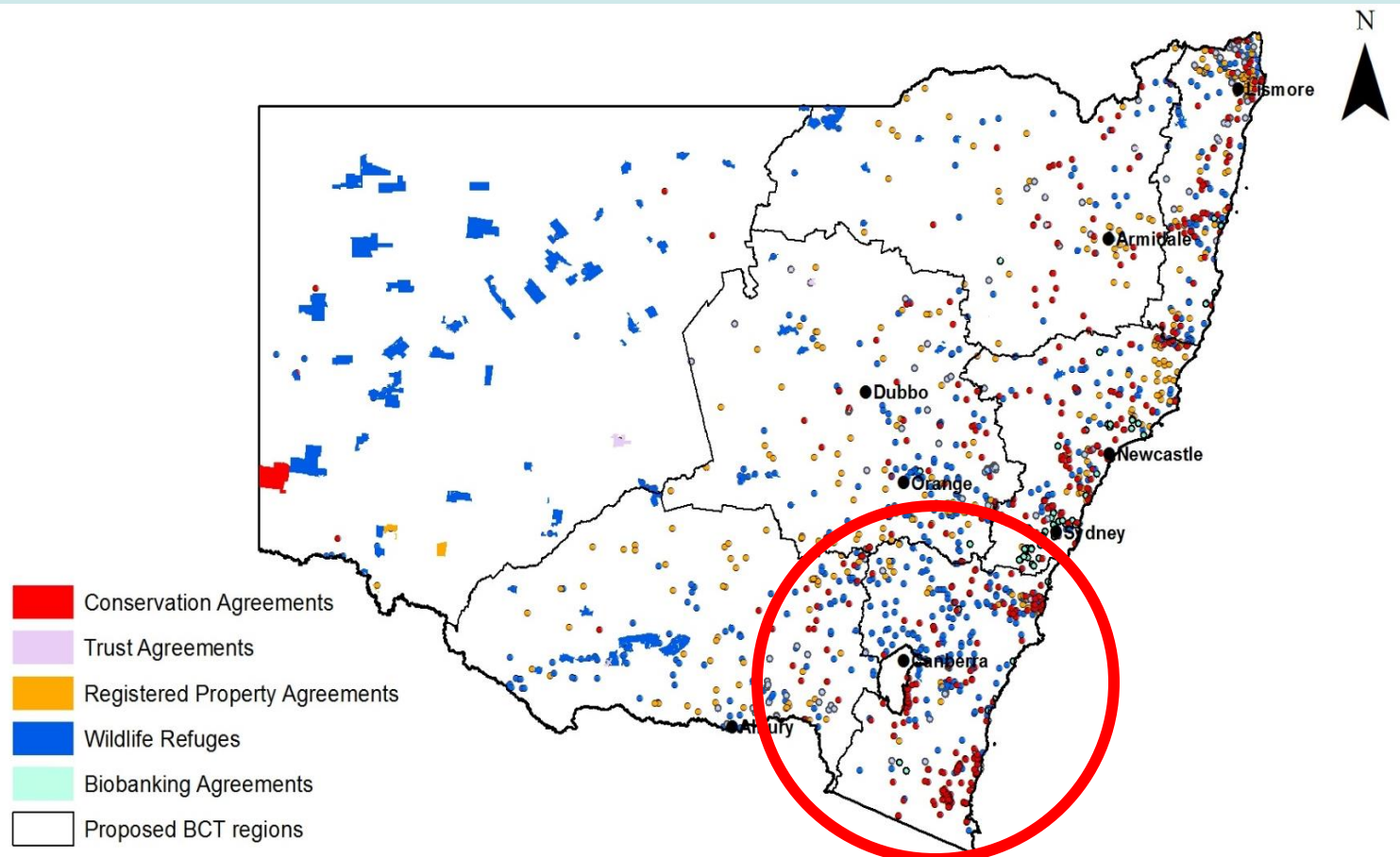
- Landholder agreements
- Biodiversity Stewardship Agreements
- Credit obligations
- Conservation Tenders
- Fixed Price Offers
- Biodiversity Conservation Actions
- Biodiversity Conservation Fund
- Place-specific biodiversity offsets schemes

Landholder Technical Support

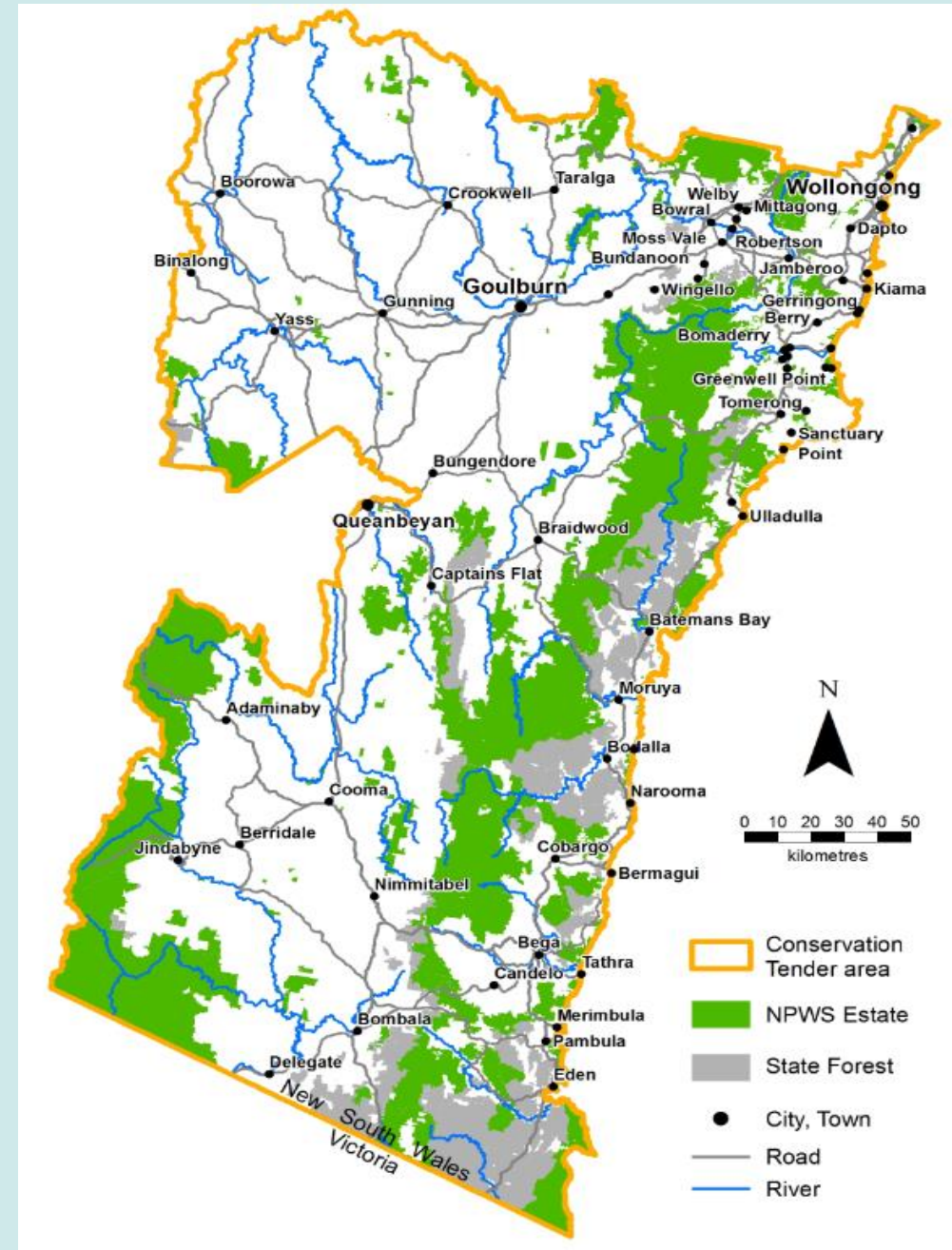
Regional conservation planning

Ecological monitoring

South East Region



- Funded agreements: 23
- Unfunded agreements: 400
- Biodiversity stewardship agreements: 35



Regional Manager
Paula Pollock (Narooma)



Paula Pollock
Regional Manager
Ph 02 6229 7062

Senior Landholder Support Officer
Adam Hook (Fitzroy Falls)



Adam Hook
Senior Landholder Support Officer
Ph 02 4887 8260
Contact for the Southern Highlands



Kevin Chaplin
Senior Landholder Support Officer
Ph 0436605627
Contact for Yass and surrounds

Senior Ecologist
Donna Hazell (Queanbeyan)



Tobi Edmonds
Senior Ecologist
Ph 02 6229 7094
Contact for Far South Coast



Rob Armstrong
Ecologist
Ph 0459140084



Donna Hazell
Senior Ecologist
Ph 02 6229 7051
Contact for QBN Palerang and the Monaro

Senior Ecologist
Tobi Edmonds (Queanbeyan)

Ecologist
Rob Armstrong (Queanbeyan)

Program Support Officer
Sarah Sahlqvist (Queanbeyan)



Tuesday Heather
Conservation Assessment Officer
Ph 02 4428 6302



Sarah Sahlqvist
Project Support Officer
Ph 02 6229 7185



Clare Kerr
Senior Landholder Support Officer
Ph 02 9995 6604

Conservation Assessment Officer
Tuesday Heather (Nowra)

Senior Landholder Support Officer
Kevin Chaplin (Tumut)



Monaro Grasslands Tender - 2018



11 conservation agreements

in Monaro Grasslands



1,829 hectares

of land covered by these agreements



\$12 million

invested to fund the annual conservation management payments to these landholders



\$164 to \$300 per hectare per annum

is paid to landholders over the life of these agreements

New sites for: Mauve burr daisy, Hoary sun-ray, Swainson's silky pea, Creeping hop bush



Conservation tenders

- a 'reverse auction'
- eligible **landholders set their own price** to protect and manage good condition native grasslands and snow gum woodlands on their land
- landholders are invited to submit bids for funded Conservation Agreements
- Successful bidders
 - put forward the **highest value snow gum woodland and/or grassland for the best price**
 - receive annual, ongoing payments for implementing an agreed management plan
- **It is competitive:** Not all Expressions of Interest (EOI's) get site assessments and not all sites that get assessed will be successful bids



Tender Objectives

- To secure conservation of priority grassland and snow gum woodland on private land within the Snowy Monaro Local Government Area.
- To protect good examples of poorly conserved ecosystems that are subject to significant pressure and threats
- Improve long-term viability and resilience of snow gum woodland and grassland patches
- To promote long term outcomes for landholders and the environment
- To provide a cost effective, transparent, and efficient program to deliver government investment



Eligibility criteria

The proposed conservation area must:

- be located within the tender subject area, and
- support at least 20ha of the priority grassy ecosystems
- be in moderate to good condition

Other eligibility criteria apply and are listed in the landholder guide (available on the BCT website)

Indicative map also available on the BCT web site (web address at end of presentation)

Landholders within the tender area but outside areas considered likely to support the priority grassy ecosystems are encouraged to contact the BCT prior to submitting an EOI.



Priority grassy ecosystem: Natural Temperate Grassland



- Federally listed
- Key features: Kangaroo grass, Poa tussock, herbs and wildflowers





Image Tim McGrath



Priority grassy ecosystem: Snow Gum Woodland





Grassland in moderate to good condition



- Dominated by exotic species or disturbance-tolerant native grass species
- History of regular fertilizer use and/or cultivation
- Very few native herbs or wildflowers
- Minimal cover or structure



- Diversity of grasses, wildflowers, herbs
- Disturbance sensitive species present
- Structurally diverse
- Small amounts of bare ground with mosses, lichen and grass litter present

Snow Gum woodland in moderate to good condition



- Introduced pasture
- Minimal native species
- Isolated trees
- No recruitment

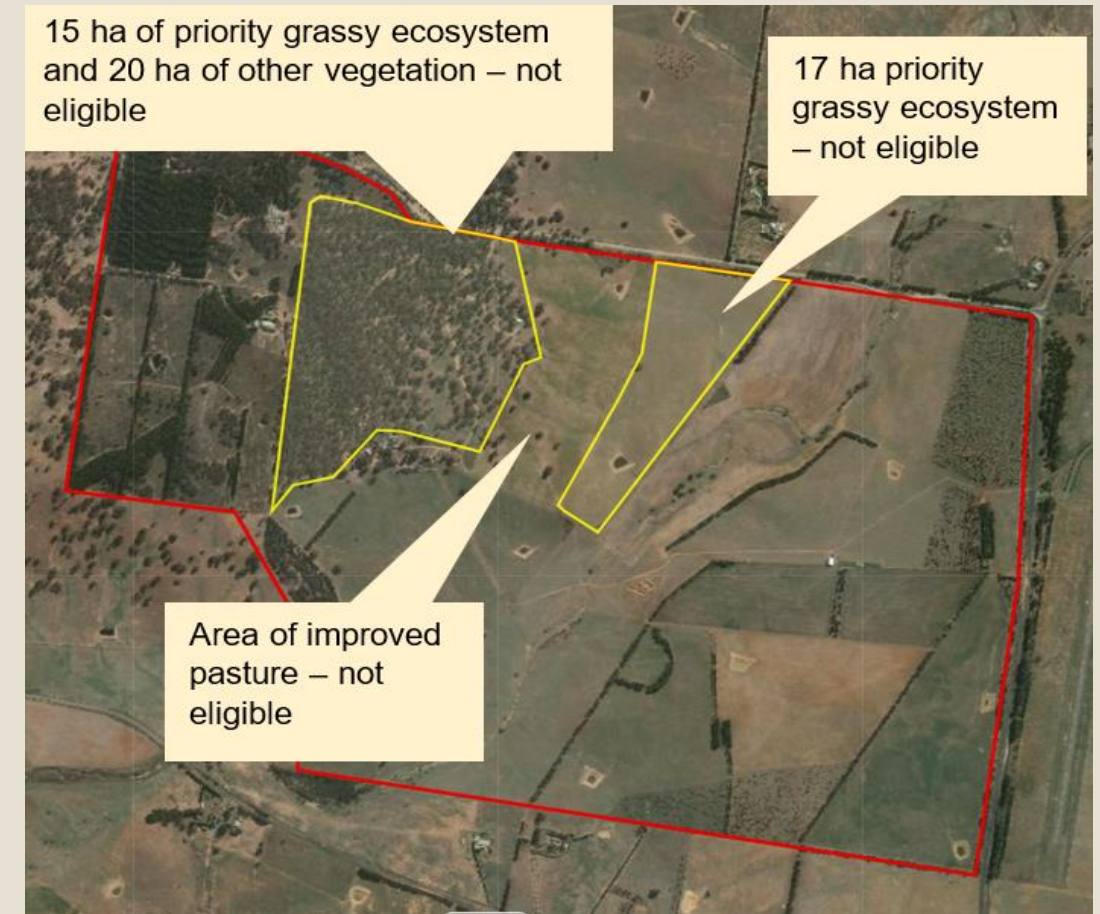
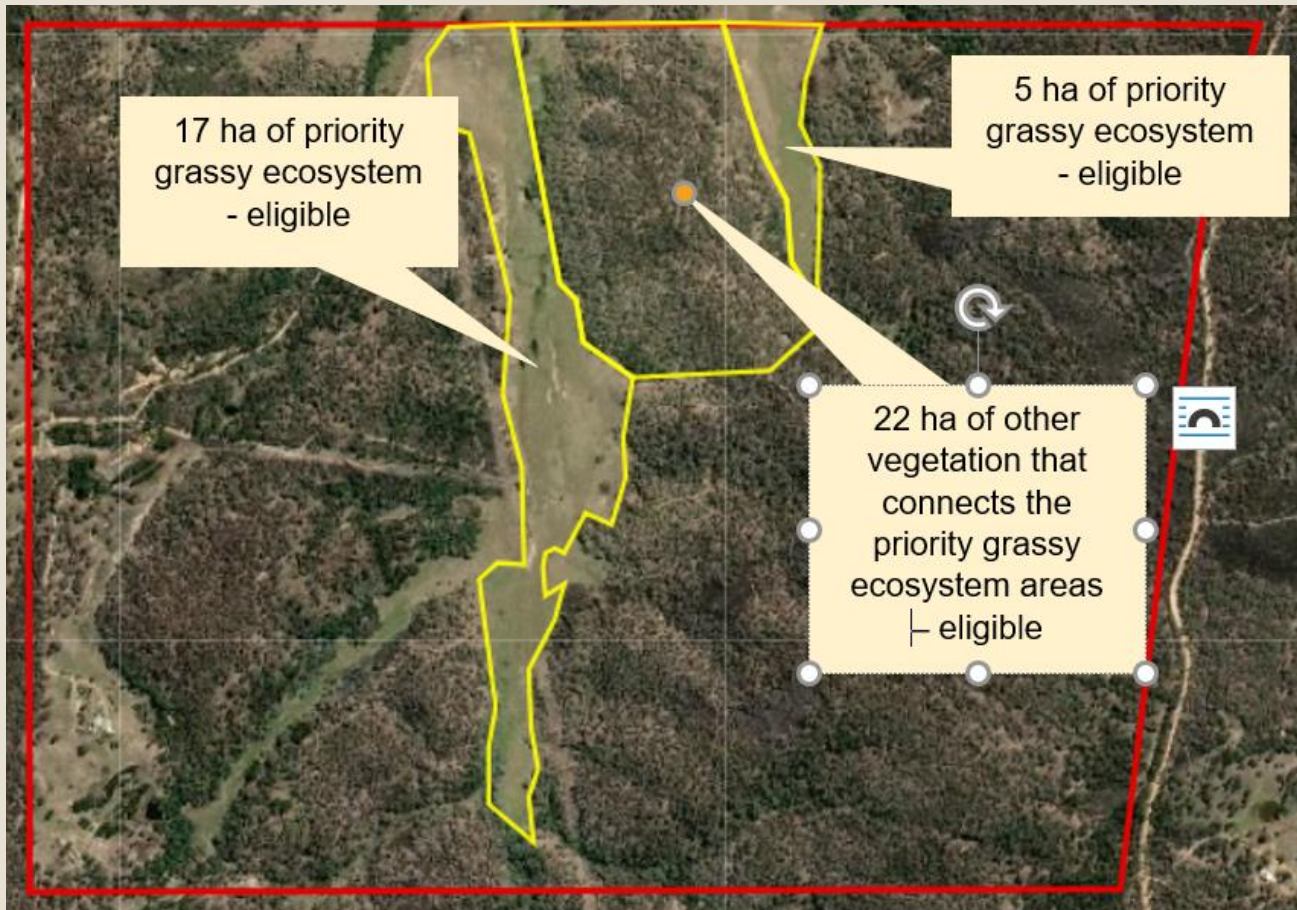


- Trees of varying sizes and species
- Low level weeds
- Diversity of grasses, wildflowers
- Shrubs may be present
- Native plant recruitment



Patches need to be connected

The proposed conservation area may contain numerous patches of priority grassy ecosystem to make up the required 20 ha but only when each of these patches are at least 1 ha in size and all patches are connected by native vegetation in moderate to good condition



Tender process

September

October

November

February

April

July

1. The BCT invites Expressions of Interest (EOI) from landholders
2. EOIs are prioritised with the highest ranking sites offered a site assessment
3. At the site assessment, the BCT works with landholders to identify an area on the property that could be managed for biodiversity conservation
4. A conservation management plan for the area is developed
5. Eligible landholders will then be able to submit a confidential bid in a Conservation Tender, setting out the annual payments they would like to receive to carry out the conservation management plan
6. Bids will be assessed and ranked by value for money
7. Successful landholders will be offered a Conservation Agreement
8. Payments will be made in accordance with the landholder's bid and will continue for the life of the agreement

Making a bid

The landholder determines the payments required to conserve and manage a site in accordance with the agreed conservation management plan.

Consider likely management costs over the life of the agreement:

- labour costs
- material costs e.g. example fencing materials or chemicals
- costs of equipment required to undertake management actions
- costs of specialist advice e.g. financial advisors, accountants
- costs associated with stock exclusion, such as alternate water sources
- loss of income or opportunity
- time and costs associated with participation e.g. reporting

Successful bidders will receive annual, ongoing payments for implementing an agreed management plan

BCT staff cannot advise on bid costing and will not know a successful bid price range



What will the management commitments be?

A conservation management plan will be prepared by the BCT in consultation with the landholder

- conservation management actions include:
 - ✓ Weed control
 - ✓ Pest control
 - ✓ Grazing management
 - ✓ Retain timber and rocks (habitat)
- The landholder selects levels of management based on their site and preferences
- Annual reporting is required
- Biodiversity outcomes will be monitored



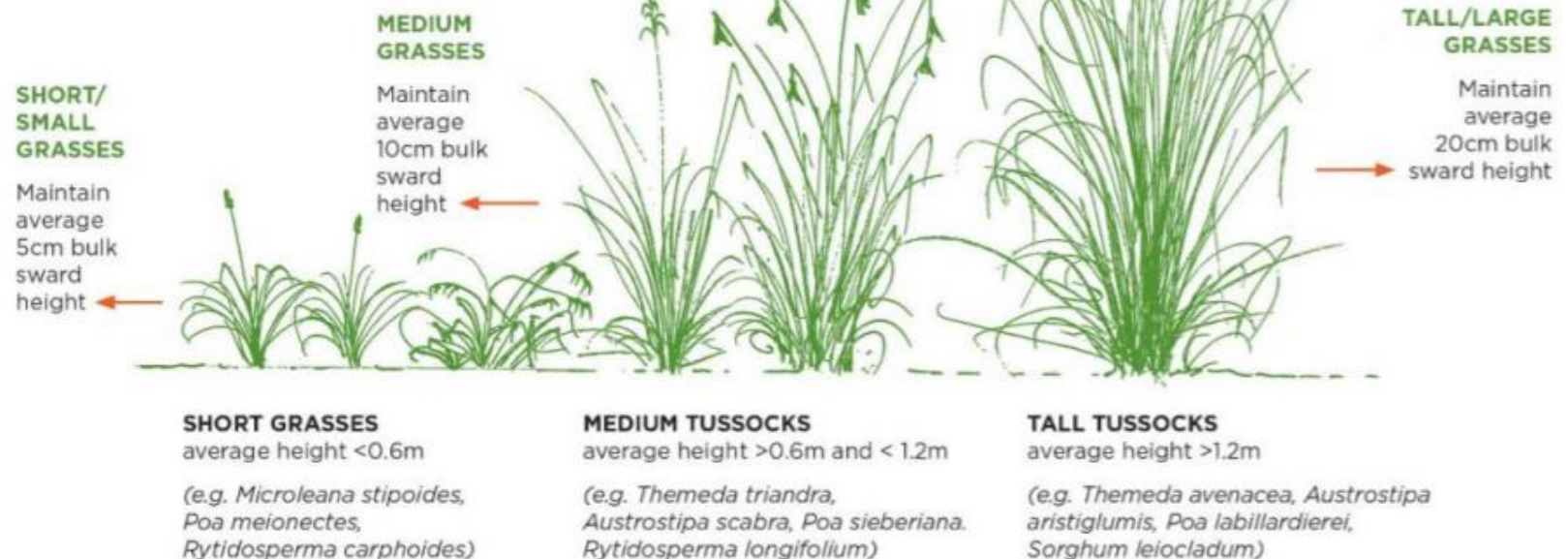
Grazing considerations

- High levels of ground cover biomass can negatively impact on biodiversity values
- Managed grazing may have a role in delivering conservation outcomes in a conservation area
- Grazing for profit is unlikely to be compatible with a conservation area
- Limitations placed on grazing may not suit every landholder
- Landholders are able to factor lost income and costs associated with enterprise adjustment into their bid

- BCT has guidelines for how grazing may be applied in a conservation area www.bct.nsw.gov.au/general-resources

Select up to three dominant grass species, determine whether they are a short, medium or tall tussock grass and maintain the height of the corresponding threshold.

Note: one paddock may have more than one threshold.





Youtube: Managing for Conservation - Grazing as a Conservation Tool

Conservation Agreements

- Registered on title
- Either in-perpetuity or for fixed-term (minimum of 15 years)

Sets out:

- Details of the parties and the conservation area
- Management of the conservation area
- Funding details
- Monitoring and reporting requirements



Submitting an EOI

- EOIs are obligation free - you can withdraw at any time
- EOIs are only open for a limited period
- Don't just put the minimum eligible area - make an estimate
- Use the indicative map to identify candidate areas on your property
- Call the BCT for assistance with your EOI if you need to
- EOI form will be available from the 20th September on the tender web page



Find address or place

Tools info

- Find address or place**
Enter the address of your property to zoom to that location.
- Basemap Gallery**
Use to change the basemap from a satellite image to a street map.
- Layer List**
Use to turn on and off layers of information.
- Measurement tool**
Use to calculate area (in hectares) of a proposed conservation area.
- Lot search**
Enter Lot and Deposited Plan numbers for a parcel (e.g. 11//DP235342) to zoom to that location.

About

Welcome to the map viewer for the Snow Gum Woodlands and Grasslands conservation tender (south)

This map allows you to zoom in to your property to determine if you are within the tender area (shown in orange). It also indicates if your property occurs in an area where the priority vegetation for this tender is considered more likely to occur (shown in purple).

If you are within the tender area, and meet the other eligibility requirements outlined in the Landholder Guide, you can submit an expression of interest (EOI) for a site assessment. EOIs must be submitted while the EOI period is open. BCT will then register your EOI and confirm your eligibility to progress to the next stage of the tender.

Please refer to the Landholder Guide for this tender on the [BCT website](#) for the full eligibility criteria and further information on the tender process.

3km
149.225 -36.847 Degrees

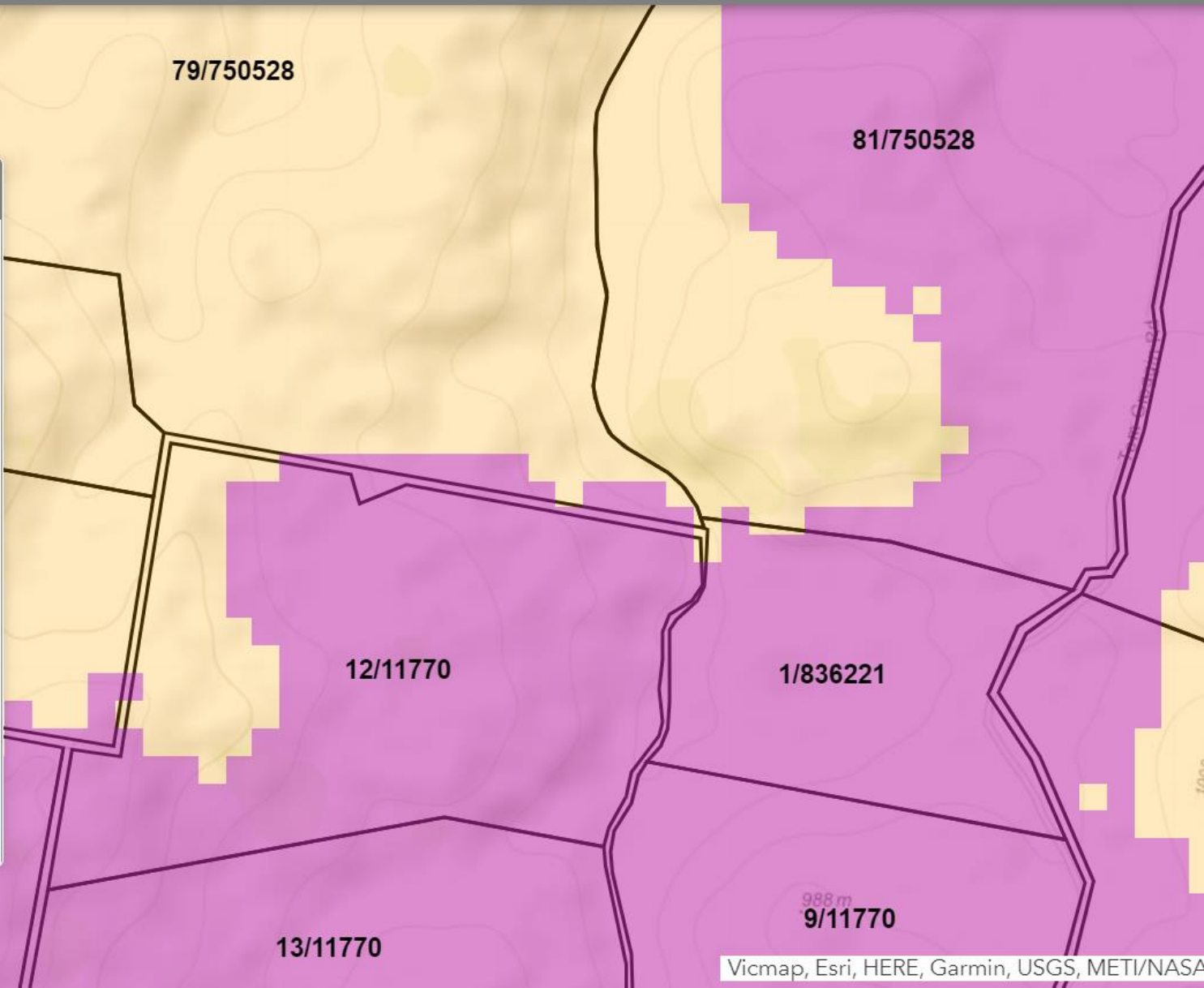
Find address or place

Map navigation icons: Home, Refresh, Full Screen, Back, Forward, Layers, Scale, Lot DP, Tools

Layer List

Layers

- Indicative Snow Gum woodland and grassland area
- Conservation Tender Area
- Local Government Area
- Cadastre - Lot (displays at 1:72,000 scale)
- Lot Ownership



Benefits to the landholder

- Conserve land while retaining management and ownership
- Maintain or actively improve the ecological value of the property
- Reliable source of income unaffected by seasonal conditions or agricultural markets
- Land tax exemption
- Set up a long term legacy for the future
- Environmental services: pollination, soil protection and health, natural pest control, water health, stock shelter, amenity within the agricultural landscape
- BCT's Landholder Technical Support Package: advice, phone calls, site visits, newsletters, field days, website information, landholder networking opportunities and monitoring assistance
- Connection to other landholders managing for conservation outcomes



Summary

- The Tender is competitive
- Targeting grasslands and snow gum woodland areas that meet the eligibility requirements of the tender
- The BCT will prioritise EOIs for site assessment: highest-ranking sites will be prioritised for site assessment
- Bids will be assessed on value for money basis
- Successful landholders sign up for a Conservation Agreement that is registered on title
- Conservation Agreements are funded for the term of the agreement (min 15 years)





Milestone	Date
EOI period	20 September – 8 October 2021
Assessment	16 Nov – 10 Dec 2021
Mgt Plans	February 2022
Bids close	April 2022
Evaluation	July 2022
Board consideration	August 2022

Online information sessions :

- Tuesday 7th September 2021, 7pm
- Thursday 23rd September 2021, 7pm

Any landholders unable to access online information should call the BCT for assistance

Where to find more information?

<https://www.bct.nsw.gov.au/current-conservation-tenders>

Scroll down to Snow Gum Woodland and Grassland conservation tender

- Fact sheet
- Landholder Guide (coming soon)
- Interactive map

Email: info@bct.nsw.gov.au

Phone: 1300 992 688



Biodiversity
Conservation
Trust

Questions?

- How much would I get paid
- Would my country be 'locked up'
- How do I work out what to bid?
- Should I talk to my neighbours about this?
- What if I have existing or past agreements?
- What do I need to do now to prepare for the tender?



Snow Gum Woodland and Grassland Tender

