

# Conservation tender Plains-wanderer habitat

## Do you want to earn annual payments for managing Plains-wanderer habitat on your land?

The NSW Biodiversity Conservation Trust (BCT) is calling for expressions of interest from landholders in the NSW Riverina Plains with Plains-wanderer habitat on their land.

Through this tender, eligible landholders are given the opportunity to bid to protect and appropriately manage native grasslands for the Plains-wanderer. Bids will be ranked on a best biodiversity value for money basis.

If successful, applicants will receive annual payments for implementing an agreed management plan.

The BCT has a set an upper limit on the amount that it will pay for Plains-wanderer habitat and for other eligible native vegetation. The maximum price for Plains-wanderer primary habitat (mapped) is \$40/ha/yr. The maximum price you can bid for other eligible native vegetation that is not primary habitat is typically in the range of \$9 to \$28.80/ha/yr depending on your local government area and land capability class (see Table 1 and visit the BCT website to confirm prices for your property).

Landholders that progress to the bid stage will have the option to include a **contribution to essential conservation fencing** in their bid in accordance with the [BCT Essential conservation fencing infrastructure guidelines](#). Where a fencing request is agreed, the BCT will make a contribution of either a) up to 50% of direct fencing costs or, b) up to the relevant BCT cost

benchmark (\$6.00 to \$8.00/m depending on the location and characteristics of the site), whichever is the lower. These costs will be in addition to annual management payments for the agreement and will be typically paid in the first year of the agreement.

| Local Government Area | Eligible Plains-wanderer primary habitat (mapped) Max price (\$/ha/yr) | Other eligible native vegetation                  |  |
|-----------------------|--|---|--|
|                       |  | Land capability Classes 4-6 Max price (\$/ha/yr)* | Land capability Classes 1-3 Max price (\$/ha/yr) |
| Griffith              | \$40   | \$26.64   | N/A  |
| Leeton                |  | \$26.64   | \$48.60  |
| Narrandera            |  | \$28.80   | \$53.28  |
| Federation            |  | \$26.64   | \$57.78  |
| Murrumbidgee          |  | \$23.40   | \$40.03  |
| Edward River          |  | \$22.32   | \$39.96  |
| Hay                   |  | \$9.00  | N/A  |
| Carrathool            |  | \$13.32   | N/A  |

Table 1 - Maximum bid prices per local government area.

\*Most lands in the tender area are Land Capability Class 4-6. You can check your Land Capability Class and the corresponding maximum price in the interactive Plains-wanderer conservation tender web map viewer.

## Why Plains-wanderer habitat?

The BCT opens conservation tenders in high priority areas selected for their important biodiversity values. The Plains-wanderer is an endangered bird requiring significant recovery efforts to ensure its survival. Long term

appropriate management of habitat on private land is a critical step to securing the persistence of the Plains-wanderer.

The Riverina Plains are home to the largest population of the endangered Plains-wanderer in NSW. The NSW Saving our Species program lists the tender area as the priority management site in the current recovery strategy.



Female Plains-wanderer. David Parker / DPIE

## How do I know if I'm eligible?

To be eligible for this tender, the part of your land that you wish to have considered as a conservation area needs to:

- I be within the tender area shown on the map on this factsheet;
- I have a minimum of 100 hectares of mapped Plains-wanderer habitat; and
- I have native vegetation that is in moderate to good condition (this will be determined by the BCT during site assessment).

Successful landholders will enter into a conservation agreement, which is registered on the title of the land. Landholders choose either a fixed term (minimum 15 years) or an in-perpetuity agreement.

## What is the process?

You can apply to participate in the tender by sending a completed expression of interest (EOI) form via [info@bct.nsw.gov.au](mailto:info@bct.nsw.gov.au) or call the us on **1300 992 688**. The form will be available on the BCT website from 2nd November 2020.

**EOI forms must be received by 7th December 2020.**

Submitting an EOI comes with no obligation to proceed with participating in the tender.

## Who is the BCT?

The BCT is a statutory organisation within the NSW Government that was established in 2017 to protect and enhances biodiversity in NSW. We do this by supporting, facilitating and encouraging landholders to conserve biodiversity on their land, for the long term.

The BCT provides a unique opportunity for private landholders to secure an additional revenue stream to conserve and manage the native biodiversity on their land.

## How do I get more information?

Visit the BCT website at [www.bct.nsw.gov.au](http://www.bct.nsw.gov.au) email us at: [info@bct.nsw.gov.au](mailto:info@bct.nsw.gov.au) or call us on: **1300 992 688**.

You can also learn more about this unique opportunity by registering to attend one of our information sessions in Hay, Jerilderie, Morundah or online. View dates and booking details at <https://bct-plainswanderer.eventbrite.com.au>

Please note that all face-to-face sessions will be run in accordance with a COVID-19 Safe Plan.

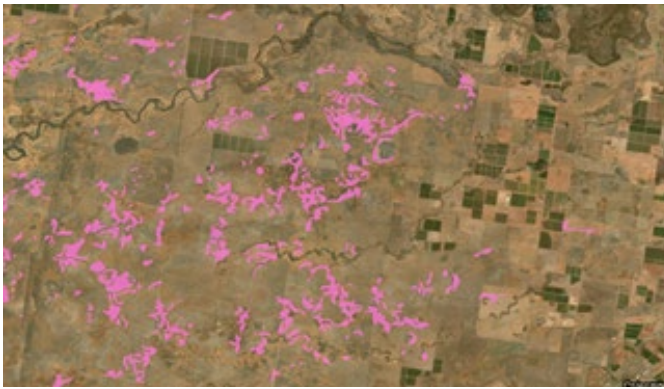
A recording of one of the online sessions will be available on our website.



## What is Plains-wanderer habitat?

Plains-wanderers live in grasslands with an open structure that allows them to forage efficiently for seeds and insects yet also easily detect and hide from approaching predators.

In the Riverina grasslands, areas of hard red loam are slightly elevated islands that support vegetation favoured by the Plains-wanderer; referred to as primary habitat. When in 'ideal' condition this vegetation has lots of bare ground between grass tussocks and a good variety of herbs.



Our online map viewer will allow you to identify patches of mapped Plains-wanderer habitat on your property and estimate the area.

Plains-wanderers will disappear from primary habitat sites where the grassland structure becomes too dense or too sparse which is why active management is essential.

In seasons following high rainfall grasses can crowd out smaller plants and move into the spaces which Plains-wanderers use. In this situation, strategic grazing for ecological outcomes is an important tool for controlling grass growth and maintaining biodiversity suitable for Plains-wanderers to persist. So you can identify the Plains-wanderer habitat on your property, we have published an interactive map

on the BCT website. If you have questions on the map or about habitat on your property please get in touch.



Male Plains-wanderer. *David Parker / DPIE*



Plains-wanderer primary habitat. *Damon Oliver / DPIE*



## Plains-wanderer habitat conservation tender area map

This map displays the Plains-wanderer conservation tender area. The BCT will accept EOIs from landholders in this area who have at least 100 ha of mapped Plains-wanderer habitat in moderate to good condition on their land.

