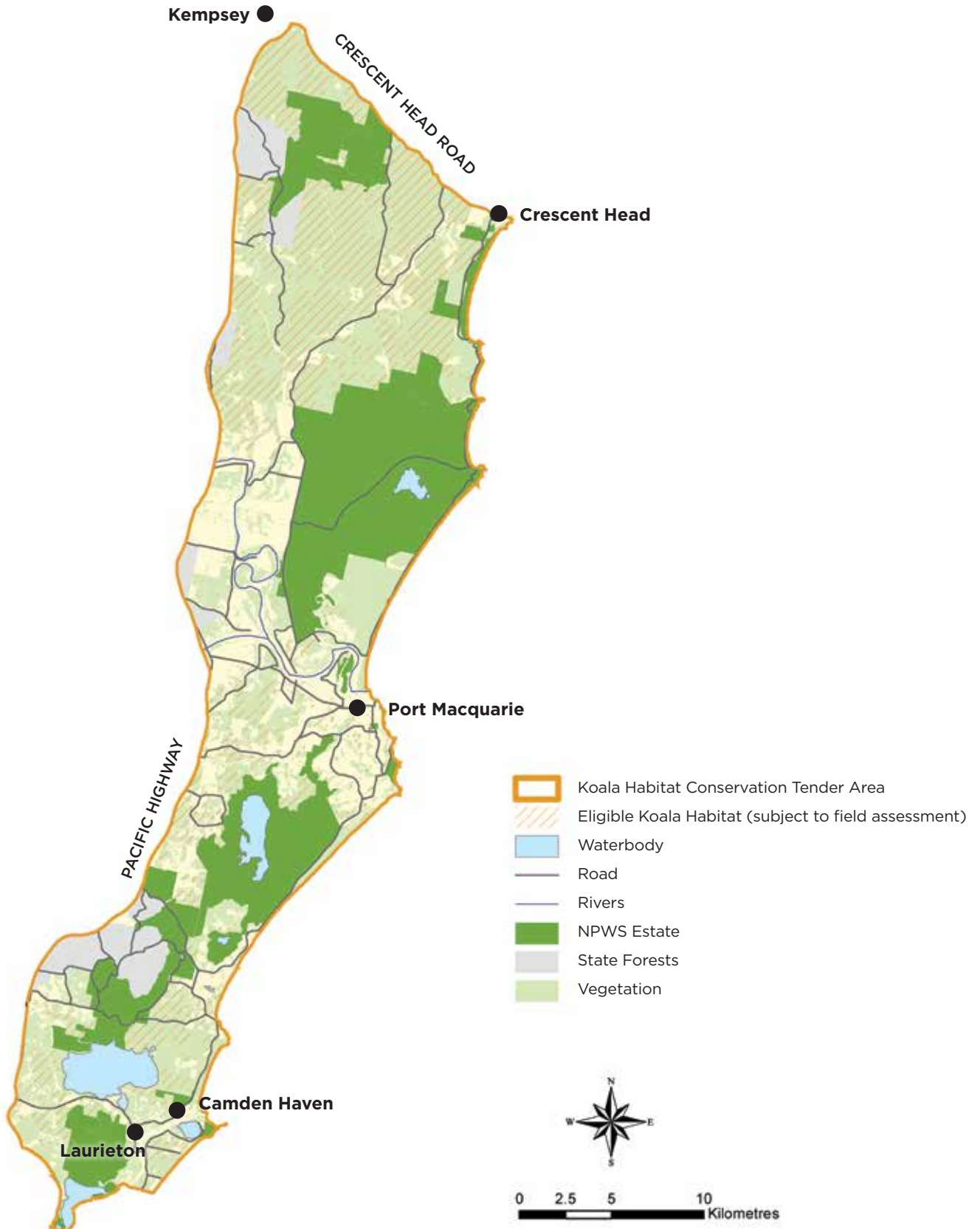


# Koala Habitat Port Macquarie



# Koala Habitat Port Macquarie

**Located along the coastal strip north and south of Port Macquarie, this area contains some of the most significant Koala populations in NSW.**

The Koala habitat tender area lies east of the Pacific Highway, between the Kempsey – Crescent Head Road in the north, and the Camden Haven River in the south. It includes parts of both the Port Macquarie – Hastings, and Kempsey Local Government Areas.

The project area contains two distinct areas, north and south of the Hastings River, each suspected to have genetically distinct Koala populations.

To the south of the Hastings River, there is a state-significant Koala population, with a long history of Koala occupation. Here, the Koala population is thought to number over 1,000, including a nationally significant

source population of over 500 animals located on private and public lands surrounding Lake Innes.

To the north of the Hastings river, the area is characterised by a lower density of Koalas, perhaps about 400 animals. Whilst this area was previously known to support Koalas, in the past year, a previously unknown local population of Koalas was found in lands adjoining Limeburners Creek Nature Reserve.

Approximately 50 animals were recorded in post-fire surveys, and this suggests that the area supports an important coastal population. These additional records have led to increasing interest in the area north of the Hastings River as a significant area for the long-term survival of the Koala in NSW.

In both areas, the most important habitats are those with Koala feed trees such as Tallowwood, Swamp Mahogany, Forest Red Gum, and Small-fruited Grey Gum.

On land that has these trees, other tree species may also be important, such as Thin-leaved Stringybark, Scribbly Gum, Flooded Gum, Blue Gum, Red Mahogany, and White Stringybark.

Sites of 10 hectares (or more) of Koala habitat are eligible for the program. Where a site on private land adjoins an area of protected habitat (e.g., on an adjoining nature reserve) the BCT may consider sites larger than 5 hectares.

Through this project, the Biodiversity Conservation Trust (BCT) aims to protect important Koala habitats on private lands both north and south of the Hastings River. This will help secure Koala populations on these private lands, and in adjoining and nearby nature reserves.

[www.bct.nsw.gov.au](http://www.bct.nsw.gov.au)

email: [info@bct.nsw.gov.au](mailto:info@bct.nsw.gov.au)

phone: 1300 992 688

 NSW BCT  BCT\_NSW



**Biodiversity  
Conservation  
Trust**